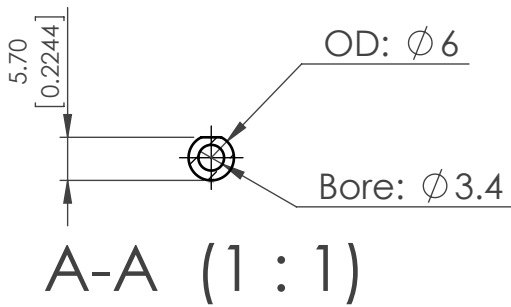
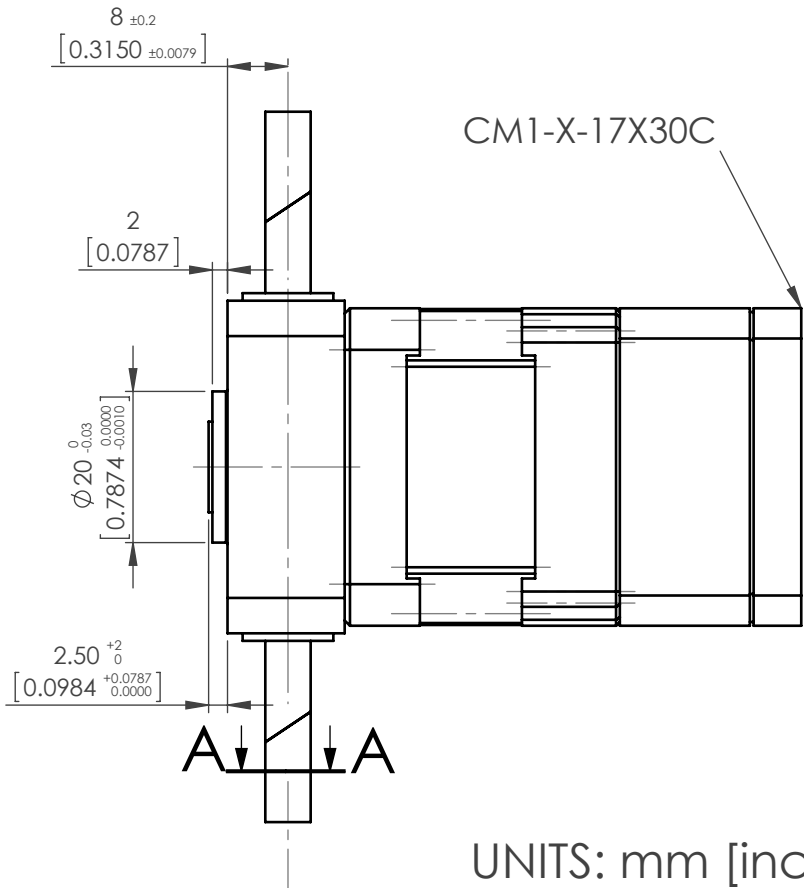
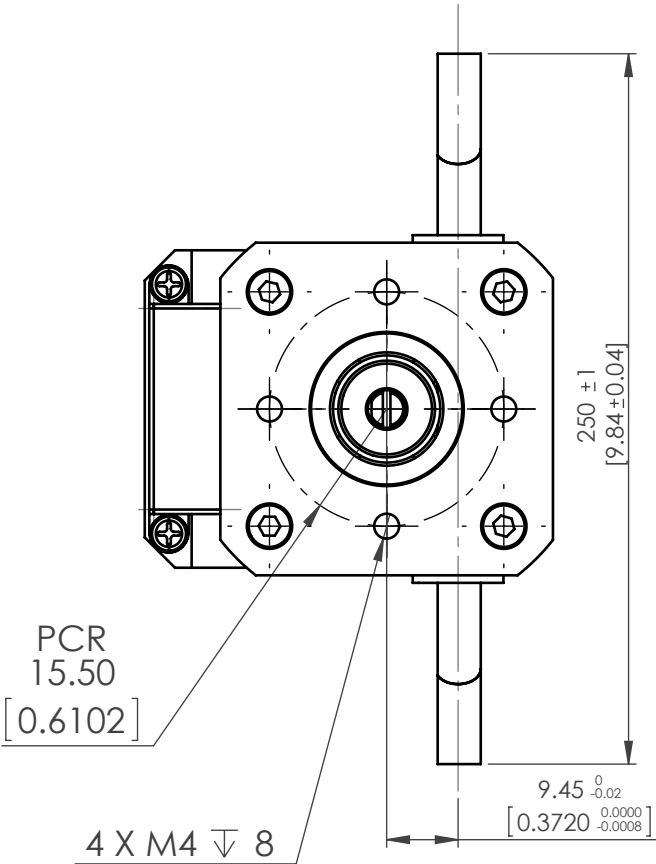
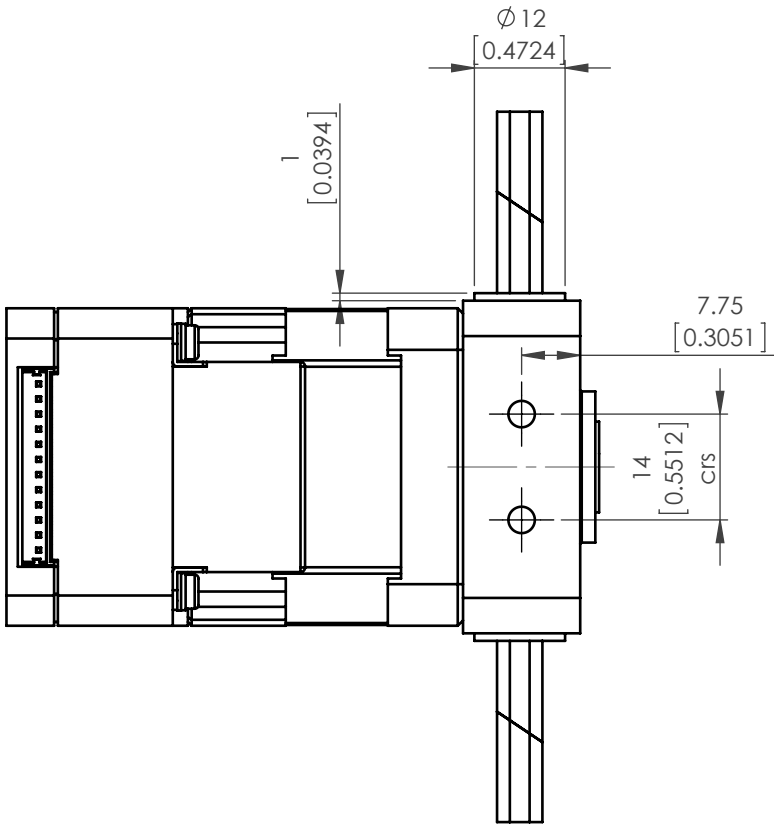
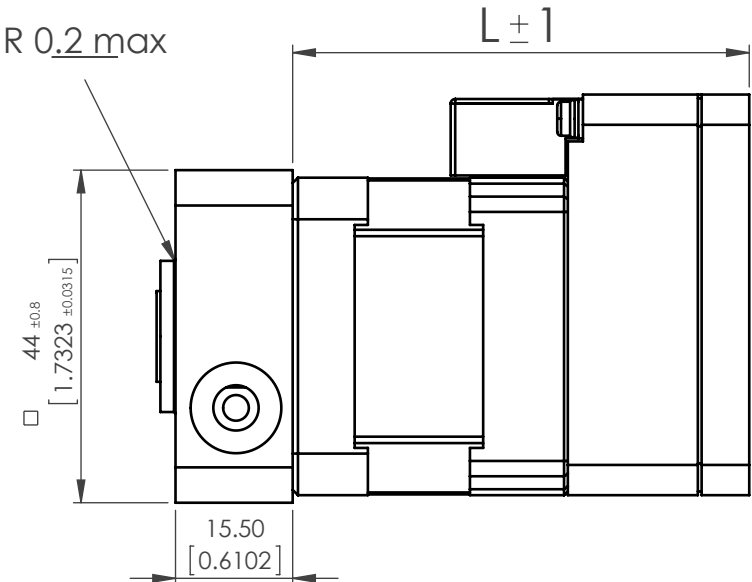
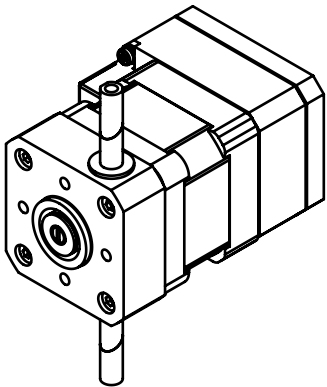



TECHNICAL INFORMATION

Part Number	RRA17-06-250-17S30C	RRA17-06-250-17L30C
Continuous Axial Force (N)	3	15
Momentary Load (N)	12	25
Travel Range (mm)	200	
Resolution	0.00085mm with 50,000 steps/rev	
Max Speed	300mm/sec	
Tempurature Range	Between 0°C and 40°C	
Repeatability	0.025mm	
Side Wobble (fully extended)	±0.2mm	
Life time	5 million cycles minimum	
Backlash	0.08mm linear movement	
Rack material	316 grade stainless steel	
Pinion Material	PEEK™	St Steel
Lubrication	Lubrication free	PTFE based grease

Motor	L
CM1-X-17S30C	60.4
CM1-X-17L30C	75.3mm



UNITS: mm [inch]

Unless otherwise specified, tolerance to be: CNS 4018 IT 14 Linear measures 0.5-3 ±0.1 3-6 ±0.1 6-30 ±0.2 30-120 ±0.3 120-315 ±0.5	NAME	DATE	DO NOT SCALE DRAWING	DIMENSIONS ARE METRIC	
	DRAWN	M. Dank	Jan. 25, 2012	TITLE: RRA17 Racktuator	
	CHECKED				
	ENG APPR.				
PROPRIETARY AND CONFIDENTIAL THE INFORMATION CONTAINED IN THIS DRAWING IS THE SOLE PROPERTY OF MYOSTAT MOTION CONTROL INC. ANY REPRODUCTION IN PART OR AS A WHOLE WITHOUT THE WRITTEN PERMISSION OF COOLMUSCLE INC. IS PROHIBITED.	 Myostat Motion Control Inc. +1 905-836-4441 www.myostat.ca		SIZE B	PRT. NO. RRA17-06-250-17X30C	REV 1.2
			SCALE: 1:1	WEIGHT: -	SHEET 1 OF 1